



£235,000

Heath Road

Hounslow, TW3 2NP



PROPERTY SUMMARY

Located just a short walk from Hounslow Train Station, this fully renovated second-floor one-bedroom flat offers stylish, low-maintenance living in a highly convenient location.

The property has been completely refurbished throughout, with everything internally including modern fittings, finishes and double-glazed windows, providing excellent insulation and energy efficiency.

The accommodation comprises a bright open-plan reception room and kitchen, creating a contemporary and functional living space filled with natural light. The bedroom is cosy and best suited to a minimalist layout, while the modern bathroom is sleek, modern and finished to a high standard.

Offered with no onward chain, this property presents an excellent opportunity for first-time buyers looking for a turnkey home, as well as investors seeking a well-connected property in a strong rental area.

Ideally positioned close to excellent transport links, Hounslow High Street and a wide range of local amenities, this flat is ready to move straight into.

Long Lease – 970 Years Remaining

Ground Rent - £50/pa

Service Charge - £250/pa (Building Insurance)

1

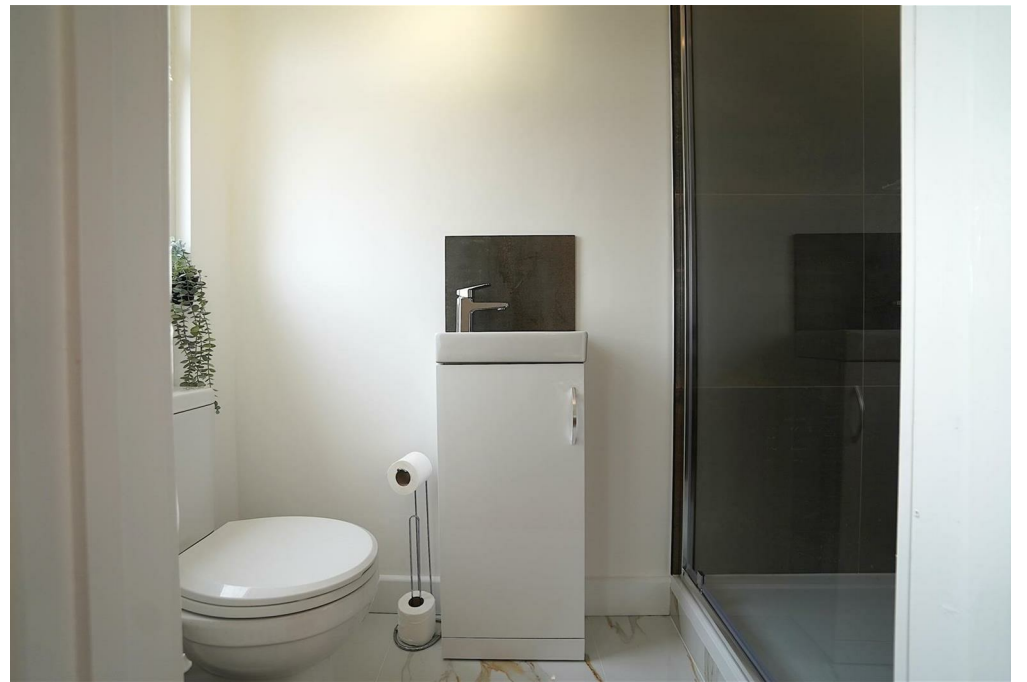


1



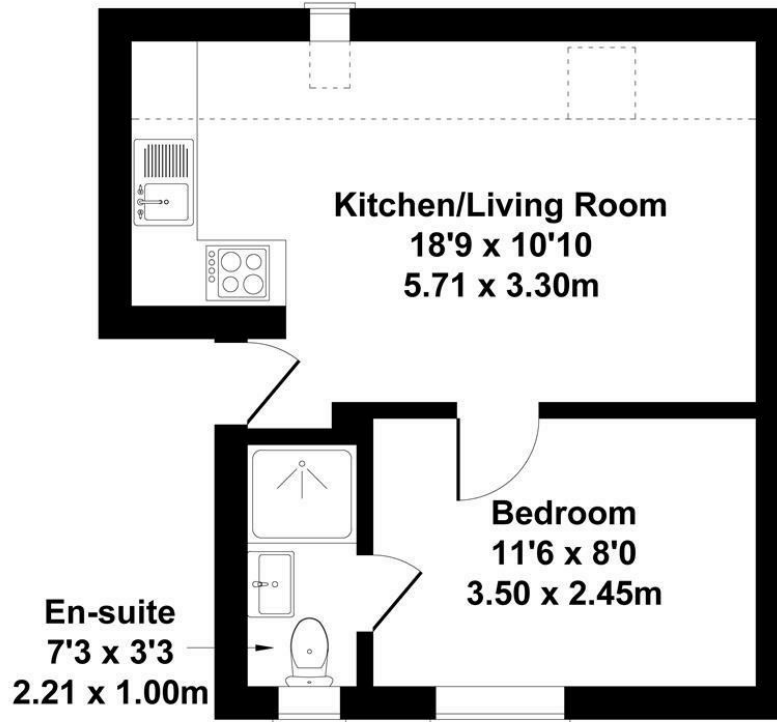
1





Heath Road, Hounslow, TW3

Approximate Gross Internal Area
355 sq ft - 33 sq m



SECOND FLOOR

Not to Scale. Produced by The Plan Portal 2026
For Illustrative Purposes Only.

Shaw
& Co

LOCAL AUTHORITY

Hounslow

TENURE

Leasehold

COUNCIL TAX BAND

A

VIEWINGS

By prior appointment only

Energy Efficiency Rating		Current	Potential
Very energy efficient - lower running costs			
(92 plus) A			
(81-91) B			
(69-80) C		71	78
(55-68) D			
(39-54) E			
(21-38) F			
(1-20) G			
Not energy efficient - higher running costs			
England & Wales		EU Directive 2002/91/EC	



Agents Note: Whilst every care has been taken to prepare these particulars, they are for guidance purposes only. All measurements are approximate and are for general guidance purposes only and whilst every care has been taken to ensure their accuracy, they should not be relied upon and potential buyers/tenants are advised to recheck the measurements

Shaw
& Co
ESTATE
AGENTS

OFFICE ADDRESS

Whitton
Twickenham
TW2 7LT

OFFICE DETAILS

0208 894 3646
whitton@shawandcoestates.com